

**Strengthening Agriculture and Fisheries Services
of Local Government Units**

**A Framework for Department of Agriculture and
Local Governments Partnership**

League of Provinces of the Philippines

I. Introduction

The on-going efforts of the National Government to rationalize the bureaucracy are not only a welcome move but more importantly a necessary effort to improve governance, promote, efficiency, and ensure delivery of services. Two (2) Executive Orders that Her Excellency President Gloria Macapagal Arroyo issued are opportunities to accomplish this goal and at the same time enhance decentralization and local autonomy.

First, is Executive Order No. 366, signed on October 4, 2004 “**DIRECTING A STRATEGIC REVIEW OF THE OPERATIONS AND ORGANIZATIONS OF THE EXECUTIVE BRANCH AND PROVIDING OPTIONS AND INCENTIVES FOR GOVERNMENT EMPLOYEES WHO MAY BE AFFECTED BY THE RATIONALIZATION OF THE FUNCTIONS AND AGENCIES OF THE EXECUTIVE BRANCH.**” For the local governments through their Leagues, this is an opportunity to engage the national agencies that have devolved some of their functions in the furtherance of local governance and improving NGA-LGU relationships while the former are rationalizing their functions.

Second, is Executive Order No. 444, issued on July 5, 2005 “**DIRECTING THE DEPARTMENT OF INTERIOR AND LOCAL GOVERNMENT TO CONDUCT A STRATEGIC REVIEW ON THE CONTINUING DECENTRALIZATION AND DEVOLUTION OF SERVICES AND FUNCTIONS OF NATIONAL GOVERNMENT TO LOCAL GOVERNMENT UNITS IN SUPPORT OF THE RATIONALIZATION PROGRAM OF THE FUNCTIONS AND AGENCIES OF THE EXECUTIVE BRANCH.**” Very much related to E.O. 3666, this issuance is welcomed by the local governments as an essential prospect to formulate strategic and long term recommendations and courses of action to support and strengthen decentralization efforts to achieve genuine local autonomy.

Thus, this paper hopes to contribute to these National Government initiatives by providing insights and strategies on how the local governments (through their respective Leagues) could actively participate in achieving the goals of these two Executive Orders. The recommendations are particularly forwarded to the Department of Agriculture with whom the League of Provinces of the Philippines (LPP) was assigned to partner in this process by the Committee on Devolution.

II. Underpinnings of Partnership: The LGU Perspective

In order to capture the basis for a new DA-LGU partnership, it was necessary to get feedback from the frontliners upon which the ground work for engagement by may be laid to set some basic principles. Information was gathered through two instruments, namely, the survey questionnaire developed by the Committee on Devolution of E.O. 444 and the questionnaire on agricultural services delivered by LGUs which was developed by the LPP in cooperation with the Philippine Institute for Development Studies (PIDS) and the Economic Policy Reform and Advocacy (EPRA) Project of the Ateneo School of Economics. The results of these surveys were collated and synthesized in the “LPP Workshop on Agriculture and Fisheries Development” at the NEDA sa Makati on December 14-16, 2005. The workshop was attended by 19 participants (mostly Provincial Agriculturists) who were representing the governors who are officers and members of LPP’s National Executive Board.

Basic Principles

The workshop generated the following principles which should guide the rationalization of the DA and the further devolution of functions.

1. ***The goal of Philippine development is Poverty Alleviation and Social Equity.*** Government plans and projects must focus on improving the quality of life of its citizens. In particular, agricultural development must better the lives not only of the farmers but of the rural poor in general who comprise more than a half of the population. Programs and services must result in greater productivity, access to market and resources both financial and technical, competitiveness, and better income.
2. ***National development goals are best achieved through strengthened local autonomy and decentralization.*** While national development goals must by necessity established at the national or central level, ensuring their accomplishment greatly depends on the autonomy and capability of local governments to implement doable, relevant and feasible programs at their level. Therefore, all efforts to rationalize government must work toward strengthening of local autonomy and decentralization. All efforts must proceed from the gains under the 1991 Local Government Code (LGC) and therefore, there must be no diminution of powers and authorities. Rather empowerment of LGUs must be paramount, whereby “Home Rule” must prevail in which local concerns are better addressed by local governments. National government agencies must work along the principles of subsidiarity, that is, plans and decisions must be made at the lowest possible political level by extending powers, authorities, powers and resources to sub-national levels.
3. ***National Government focuses on national goals, local governments focus on effective programs and services.*** National level of government must concentrate on providing the appropriate policies, goals, standards, and targets. Its resources shall be geared toward supporting the implementation of goals and

targets while local governments are the key actors and are expected to deliver their mandates.

4. ***National Government steers, local governments row.*** National Government is expected to create a conducive environment and to set directions for development, while local governments are expected to provide goods and services for public welfare. However, it should be also emphasized that each level of LGU must perform steering functions based on their exclusive mandates.
5. ***Effective planning and implementation is participatory.*** In planning, budgeting and implementation of programs and projects, participation of all stakeholders is necessary to establish ownership and thus ensure quality and acceptability of the undertakings.
6. ***Government must address public goods and leave the private goods to the private sector.*** Public goods are those whose value do not diminish but instead increase while private goods are those whose value diminish over time. Public goods include vital infrastructures, extension services, technical assistance, standards, rules and regulations, research and development and the like. Their value has a multiplier effect and will benefit more people in the long run; seed and fertilizer distribution, on the other hand, strains scarce government resources and benefit a limited number of people. Government should identify which benefits a greater number of beneficiaries in the long run, given its limited resources. On the other hand, the private sector particularly business, including non-government organizations and people's organizations, serve a specific population and have the means and expertise to address private goods.
7. ***Particularly in agriculture, Government should look beyond political boundaries and instead develop viable areas of operation.*** Some agricultural development programs require operating beyond political boundaries, depending on the requirements of the program and the resources of the area. Thus, the DA-LGU partnership must consider the most viable area of operation as the most economically viable geographic or political unit. This may be a single province, or a single municipality, or a cluster of towns that will yield better and efficient services.
8. ***Integration and synergistic Intergovernmental Relations are key to program effectiveness and success.*** In a decentralized set-up integration of plans and projects, especially at the local level, is necessary. Bottom up planning, from the lowest LGU level up to the national government must be the norm. This will avoid redundancy, overlapping of functions and services, duplication and waste of resources. Consolidation, collaboration, and cooperation should mark the partnership relations. Furthermore, in the integration of plans, roles of each level of government are clearly defined.
9. ***Development requires equitable distribution of resources and opportunities.*** The DA-LGU partnership must always consider equity when making available resources and opportunities. Priority must be given to those

who need help most. Likewise, there must be a system also for the LGUs to “buy into” grants and a reward scheme for those performing well.

10. Information Exchange systems must be installed and accessible. To enable all levels of government to share between and among themselves information that will result in innovation, productivity, marketability, competitiveness, and efficiency. A database system must be established and Information must be shared to all stakeholders.

III. The Agricultural and Fisheries Functions of Local Governments: A Review

Two instruments were used to provide an indication of what is happening at the LGU level with regard to devolved agricultural services. First is the Survey Questionnaire on Decentralization and Devolution (Survey 1) designed by the E.O. 444 Devolution Committee. Second, is the Survey Questionnaire on Agricultural Services Provided by Municipalities and Barangay (Survey 2) designed by the LPP in cooperation with the Philippine Institute for Development Studies (PIDS) and the Economic Policy Reform and Advocacy (EPRA) Project of the Ateneo de Manila University.

Both surveys were based on the provision of the LGC particularly Section 17 – Basic Services and Facilities, which stipulates that:

“Local government units shall endeavor to be self-reliant and shall continue exercising the powers and discharging the duties and functions currently vested upon them. They shall also discharge the functions and responsibilities of national agencies and offices devolved to them pursuant to this Code. Local government units shall likewise exercise such other powers and discharge such other functions and responsibilities as are necessary, appropriate or incidental to efficient and effective provision of basic services and facilities enumerated herein.”

Section 17 likewise defines the basic services and facilities of the barangay, municipality/city and provincial governments with regard to agriculture.

Due to lack of material time and resources, the results of both surveys were used as mere indications and perceptions of the respondents. A more detailed and statistically acceptable gathering of data will be undertaken in the process of implementing E.O. 444. However, the respondents are LGU experts in the field of agriculture and have taken time to answer the questionnaire.

A. Survey 1 (Annex A). The survey covers the agricultural functions at the municipal/city and provincial levels as provided in Section 17 of the LGC. The survey form was sent to the Office of the Provincial Governor and was sent to the Office of the Provincial Agriculturist (OPA).

The survey shows that not all of the devolved agricultural services and functions stipulated in the LGC are not yet fully implemented in some LGUs, but some functions and services are partially done by the LGUs with the assistance of the DA. There were

no indications that the services are not provided by the LGUs as mandated by the Code, except those functions that could not be performed due to local conditions and geographical locations.

B. Survey 2 (Annex B to B5). Similarly, the survey was based on Section 17 of the LGC. It was administered during the LPP Policy Formulation Workshop cited earlier. In addition to functions of municipalities and the barangay mandated by the Local Government Code, questions were asked on functions beyond Section 17 which should be performed at the provincial level. There were also questions on what are the perceived problems encountered by the LGUs. These were answered by frequency. A separate section was added to gauge the Satisfaction Level of the personnel. A profiling of the participants was also generated.

The survey reveals that the barangays appear to lean toward “seldom” and “never” degree of frequency when it comes to implementing the mandate of the LGC. For municipalities provision of services gravitates toward the “sometimes” column. In the case of the provinces, figures are relatively high in the “always” column. The provision of livestock markets, animal breeding stations and artificial insemination appear in equal percentage for both provinces and municipalities in both the “always” and the “never” columns.

For the other services and functions on top of what Sec. 17 require, the respondents said that they: a) “Always” conduct program planning, monitoring and evaluation (57%); b) “Frequently” do data collection and validation (50%); c) “Sometimes” provide local farmers’ groups linkages with higher level organizations (43%); d) “Sometimes” they formulate local regulations to ensure the quality of the agriculture inputs (36%); e) “Sometimes” they prevent/regulate the use and sale of products that may cause negative externalities (43%); f) “Seldom” that they certify the quality of the products/competence of suppliers (36%) but there were respondents who also said they “never” did (36%).

There were 31 items listed as problems encountered by the LGUs. The top ten (10) problems that are “always” encountered are:

1. Financial Constraints (50%)
2. Financial Constraints of Clientele (50%)
3. Insufficient/Delayed Transportation Allowance (43%)
4. Politics (43%)
5. Lack of Transportation Facilities (43%)
6. Repayment of Loans (43%)
7. Dole Out Mentality of Farmers (36%)
8. Marketing (36%)
9. Devolution Related (36%)
10. Problems with the Bureaucracy (36%)

It is interesting to note that 50% of the respondents said that “sometimes” peace and order is a problem (50%) while only 7% said that it is “always” a problem.

IV. Proposed Framework for Department of Agriculture and Local Governments Partnership

Based on the workshop results, the following “Proposed Framework for Rationalization, Continuing Decentralization and Devolution of Agriculture and Fisheries Development” are being forwarded to the DA for consideration.

Two graphical presentations **Annex C** and **Annex D** complement this textual presentation.

A. Proposed Framework for Rationalization, Continuing Decentralization and Devolution of Agriculture and Fisheries Development (Annex C)

In the rationalization of the DA under E.O. 366 and in the process of continuing decentralization and devolution of agriculture and fisheries functions and services, the “Goal Focus” of the DA should be paramount. The partnership between the Department and the LGUs must always strive to work within the framework of the goals that RA No. 8435, otherwise known as the Agriculture and Fisheries Modernization Act (AFMA) of 1997, hopes to achieve. **These are: 1) Prosperity of Farmers; 2) Competitiveness; 3) Food Security; 4) Sustainable Production Systems.**

To be meaningful and responsive, the partnership must advance the achievement of the following cross-cutting goals:

1. **Poverty Alleviation.** Programs and services should uplift the conditions of the farmers but the whole community, in particular the agricultural community, and ultimately the whole country.
2. **Social Equity** – Information and resources should be available to as many people and government units and agencies as possible. Benefits must be accessible to all.
3. **People Empowerment** – The farmers and other stakeholders in the community must be able to participate in all aspect of the development process.

The achievement of these goals requires the integration of plans and programs through bottom-up planning from the barangay and client level to municipal/city and provincial levels up to the DA.. This can be achieved only through genuine consultation and participation of all implementers.

On the other hand, the LGUs must be able to work toward consolidation, coordination, collaboration, and complementation. Accountabilities and resource sharing mechanisms must be identified and agreed upon. At present the most viable area or unit of operation is the province. This being the case, the DA should coordinate with the provincial governments and in no instance directly deal with other lower LGUs, except in

specific instances in which a cluster of municipalities could be defined as a viable area of operation.

In terms of what roles to play, both DA and the LGUs should probably revisit and redefine their mandates. For the DA, as a national agency it should transform its focus from a commodity (production) to goal (AFMA goals). This requires that it should strengthen its capacity to deliver extension services, provide capability-building/technical support to LGUs, and to perform effective regulatory functions and state-of-the-art research and development. For their part, LGUs must be able to define specific roles and targets in the translation of national goals to local development programs and projects. This process should include fund utilization and allocation of resources of their Internal Revenue Allocation (IRA) shares and grants for national and local programs.

To effectively achieve national goals, funds for implementation must be distributed to the local governments. A National Fund Transfer System (NFTS) must be set up to prioritize those who are in need and allow capable LGUs to “buy into” grants. This will ensure equitability of resources and provide incentives for good performers.

Furthermore, LGUs must define their specific roles in rendering appropriate extension service, setting their regulatory scope, formulating their research and development niche, and contributing to information, communication and education campaigns. The DA-LGU Partnership Framework – Key Result areas (KRA) form provided in Annex D2 proposes an outline of the roles of the DA and LGUs for general engagements and specific purposes.

It must be emphasized, again, that the relationship between the DA and the LGUs must be anchored on the principles of decentralization and local autonomy.

B. The DA-LGU Framework for Partnership

The DA-LGU Framework for Partnership Matrix (ANNEX D1) shows the “Steering” roles of DA and the “Rowing” roles of DA and the LGUs, respectively, on the left side of the box. The DA in order steer shall have a National Agriculture and Fisheries Policy developed in a participatory manner. To implement this policy, it must come up with a National Agriculture and Fisheries Strategic Plan that will specify the guidelines, technical assistance, funding and monitoring and evaluation systems that it shall provide

For the “rowing” function, provincial governments must come up with their own Provincial Agricultural Development Strategic Plan in response to the national policy. This will include the issuance of the necessary guidelines, technical assistance, funding and monitoring and evaluation systems for their component cities and towns. Parallel to this the provinces will also craft their own Annual Performance Plan. For the municipalities/cities they will likewise follow the same exercise that of the province, the only difference is that the municipalities/cities could directly deal with farmers and fisher folks.

At the right-half side of ANNEX D1, the roles of central government, in this case the DA are clearly on policy making and implementation coordination. The DA is also tasked to determine the national public goods through research and development,

information, communication and education campaigns and strict enforcement of regulations and standards. At a lower scale and based on their specific conditions, the LGUs are expected to similarly determine the public goods they should be providing. In addition to these, the provinces must identify and support the Strategic Agriculture and Fisheries Development Zones (SAFDZs). The municipalities/cities are in charge of the Farm Diagnosis and Planning while the barangays will do the farm clustering.

V. Conclusion

The agriculture performance of the Philippines compared to neighboring countries is not to boast about. For the past decades the country has been, in many agriculture indicators and statistics, is taking the down trend. Although some agricultural functions and services were already devolved as enshrined in the 1991 Local Government Code, not has been achieve to dramatically uplift the conditions of the farmers and the communities.

The League of Provinces of the Philippines supports the implementation of EO 366 and EO 444. However, beyond their goals of rationalization and administrative efficiency, these EOs must be carried out in the spirit of national development and poverty alleviation. This requires that national and local government roles must be empowered to play, and synergize, their steering and rowing roles, respectively. In the process, decentralization and local autonomy must be nurtured and strengthened, as it is only through these that national development can be accelerated and made meaningful and relevant to the very people the government—both local and national—has committed to serve.

ANNEX A



LEAGUE OF PROVINCES OF THE PHILIPPINES

SURVEY ON THE STATE OF DECENTRALIZATION AND DEVOLUTION

AGRICULTURE

Total No. of Respondents : 15 Provinces

I. Section 17 of the Local Government Code devolved the following functions and services to the Local Government Units (LGUs). Is your LGU actually performing these functions?			
1. Extension and on-site research services and facilities to agriculture and fishery activities which include:			
<ul style="list-style-type: none"> Dispersal of livestock and poultry 	Full = 7 (46.66%)	Partial = 6 (40%) With support from: a. DA? Yes = 6 (40%) No = 0 If yes, what type of assistance? Financing = 3 (20%) Technical = 6 (40%) Others-breeding animals = 1 (6.6%) b. Province? Yes = 6 (40%) No = 0	Not at all = 0%
<ul style="list-style-type: none"> Dispersal of fingerlings and other seeding materials for aquaculture 	Full = 5 (33.33%)	Partial = 9 (60%) With support from: a. DA Yes = 9 (60%) No = 0 If yes, what type of assistance? Financing = 1 (6.6%) Technical = 8 (53.33) Others : fingerlings = 3 (20%) inputs = 1 (6.6%) b. Province? = 7 (46.66%)	Not at all = 0
<ul style="list-style-type: none"> Dispersal of other seedling materials for aquaculture 	Full = 5 (33.33%)	Partial = 8 (53.33%) With support from: a. DA? Yes = 8 (53.33%) No = 0 If yes, what type of assistance? Financing = 1 (6.6%) Technical = 8 (53.33%) Others: seaweed seedling = 1 inputs = 1 b. Province? = 6 (40%)	Not at all = 1 (6.6%) a. Cite reason/s <ul style="list-style-type: none"> not applicable to local conditions, geographical location financing constraints lack of technical expertise Others _____ b. DA performs functions? Yes
<ul style="list-style-type: none"> Extension and 	Full = 2	Partial = 13 (86.66%)	Not at all = 0

<p>on-site research services and facilities for palay, corn and vegetable seed farms</p>	<p>(13.33%)</p>	<p>With support from: a. DA? Yes = 13 (86.66%) No =0 If yes, what type of assistance? Financing = 6 (40%) Technical = 13 (86.66%) b. Province? Yes = 9 (60%) No = 4 (26.66%)</p>	
<ul style="list-style-type: none"> Extension and on-site research services and facilities for medicinal plant gardens 	<p>Full = 2 (13.33%)</p>	<p>Partial = 4 (26.66%) With support from: a.DA? Yes=3 (20%) No= 0 If yes, what type of assistance? Financing=0 Technical=2 (13.33%) Others=None b.Province? Yes=3 (20%) No=1 (6.6%)</p>	<p>Not at all = 6 a.Cite reasons:</p> <ul style="list-style-type: none"> not applicable to local conditions /geographical location =0 financing constraints=3 Lack of technical expertise=2 Others: not a priority=1 <p>b.DA performs functions? Yes = 1 No =0</p>
<ul style="list-style-type: none"> Extension and on-site research services and facilities for fruit trees, coconuts and other kinds of seedling nurseries 	<p>Full=6 (40%)</p>	<p>Partial=9 (60%) With support from: a. DA Yes=7 (46.66%) No=2 (13.33%) If yes, what type of assistance? Financing= 3 (20%) Technical= 7 (46.66%) Others: CDF Funds Seedlings ROS b. Province: Yes=6 (40%) No=1 (6.6%)</p>	<p>Not at all=None</p>
<ul style="list-style-type: none"> Demonstration Farms 	<p>Full=5 (33.33%)</p>	<p>Partial=10 (66.66%) With support from: a. DA Yes=8 (53.33%) No=2 (13.33%) If yes, what type of assistance? Financing=5 (33.33%) Technical=9 (60%) Others: inputs b. Province</p>	<p>Not at all=0</p>

		Yes=7 (46.66%) No=2 (13.33%)	
<ul style="list-style-type: none"> Quality control of copra and improvement and development of local distribution channels, preferably through cooperatives 	Full=1 (6.6%)	Partial=2 (13.33%) With support from: a. DA? Yes=1 No=1 If yes, what kind of assistance? Financing=0 Technical=1 Others=None b. Province? Yes=1 No=1	Not at all=5 (33.33%) a. Cite reason/s: -not applicable to local conditions/geographical location=1 -financing constraints=0 -lack of technical expertise=1 -Others: -not under agriculturist ofc b. DA performs functions? Yes=2 No=1
<ul style="list-style-type: none"> Inter-barangay irrigation system <input type="checkbox"/> Palay = 9 <input type="checkbox"/> Corn = 1 <input type="checkbox"/> Fruits & vegetables = 4 <input type="checkbox"/> Others; = 1 <p>Note: Bulacan has regular program on OSP/STW and SFR</p>	Full= 6 (40%)	Partial=7 (46.66%) With support from: a. DA? Yes= 6 (40%) No=1 If yes, what type of assistance? -financing=1 -Technical=6 (40%) Others: -equipments b. Province? Yes=7 (46.66%) No=0	Not at all=2 (13.33%) a. Cite reason/s: -Not applicable to local conditions/geographical location=0 -Financing constraints=1 -lack of technical expertise=1 Others: -function is under NIA b. DA performs functions? Yes= 0 No=0
<ul style="list-style-type: none"> Water and soil resource utilization and conservation projects 	Full = 6 (40%)	Partial = 9 (60%) With support from: a. DA? Yes=9 (60%) No=0 If yes, what type of assistance? -financing= 4 (26.66%) -Technical=9 (60%)	Not at all = 0

		Others: b. Province? Yes=6 (40%) No=3 (20%)	
<ul style="list-style-type: none"> Enforcement of fishery laws in municipal waters including the conservation of mangroves 	Full = 6 (40%)	Partial = 8 (53.33%) With support from: a. DA? Yes= 8 (53.33%) No=0 If yes, what type of assistance? -financing= 3 (20%) -Technical= 8 (53.33%) Others: b. Province? Yes= 7 (46.66%) No=	Not at all= 0 No=
2. Agriculture extension and on-site research services and facilities include (Sec. 17 3i) :			
<ul style="list-style-type: none"> Prevention and control of plant pests and diseases 	Full= 2 (13.33%)	Partial= 13 (86.66%) With support from: a. DA? Yes= 13 (86.66%) No= 0 If yes, what type of assistance? -financing= 5 (33.33%) -Technical= 13 (86.66%) Others: -chemicals b. Province? Yes= 9 (60%) No= 4 (26.66%)	Not at all=0
<ul style="list-style-type: none"> Prevention and control of animal pests and diseases 	Full= 3 (20%)	Partial= 10 (66.66%) With support from: a. DA? Yes= 10 (66.66%) No= 0 If yes, what type of assistance? -financing= 6 (40%) -Technical= 7 (46.66%) Others: -drugs, biologics, disinfectants b. Province? Yes= 6 (40%) No= 4 (26.66%)	Not at all= 0 a. Cite reason/s: -Not applicable to local conditions/geographical location= -Financing constraints= -lack of technical expertise= Others: b. DA performs functions? Yes= No=
<ul style="list-style-type: none"> Dairy Farms <input type="checkbox"/> Big scale = 0 <input type="checkbox"/> Small Scale = 4 (26.66%) <input type="checkbox"/> Backyard = 6 (40%) 	Full= 1 (6.6%)	Partial= 10 (66.66%) With support from: a. DA? Yes= 8 (53.33%) No= 2 (13.33%) If yes, what type of assistance? -financing= 4 (26.66%)	Not at all= 2 a. Cite reason/s: -Not applicable to local conditions/geographical location= 1 -Financing constraints= 2

		-Technical= 6 (40%) Others: 0 b. Province? Yes= 5 (33.33%) No= 5 (33.33%)	-lack of tech.expertise = 1 Others: b. DA performs functions? Yes= 0 No= 0
• Livestock markets	Full= 3 (20%)	Partial = 7 (46.66%) With support from: a. DA? Yes= 5 (33.33%) No= 2 (13.33%) If yes, what type of assistance? -financing= 3 (20%) -Technical= 5 (33.33%) Others: b. Province? Yes= 6 (40%) No= 1 (6.6%)	Not at all= 3 a. Cite reason/s: -Not applicable to local conditions/geographical location= 1 -Financing constraints= 2 -lack of tech. expertise= 1 Others: -no facilities b. DA performs functions? Yes= 0 No= 0
• Animal breeding stations	Full= 2 (13.33%)	Partial= 9 (60%) With support from: a. DA? Yes= 7 (46.66%) No= 2 (13.33%) If yes, what type of assistance? -financing= 0 -Technical= 5 (33.33%) Others: -breeder stocks =2 (13.33%) b. Province? Yes= 6 (40%) No= 3 (20%)	Not at all= 1 a. Cite reason/s: -Not applicable to local conditions/geographical location= -Financing constraints= -lack of technical expertise= Others: -facilities not used for the purpose b. DA performs functions? Yes= 0 No= 0
• Artificial insemination centers	Full= 2 (13.33%)	Partial= 9 (60%) With support from: a. DA? Yes= 9 (60%) No= 0 If yes, what type of assistance? -financing= 1 -Technical= 9 (60%) Others: -supplies -semen, AI paraphernalia -PCC b. Province?	Not at all= 0

		Yes= 4 (26.66%) No= 5 (33.33%)	
<ul style="list-style-type: none"> Assistance in the organization of farmers' and fishermen's cooperatives and other collective organization 	Full= 7 (46.66%)	Partial= 7 (46.66%) With support from: a. DA? Yes= 6 (40%) No= 1 If yes, what type of assistance? -financing= 0 -Technical= Others: b. Province? Yes= 6 (40%) No= 1	Not at all= 0
<ul style="list-style-type: none"> Assistance in the transfer of appropriate technologies 	Full= 2 (13.33%)	Partial= 12 (80%) With support from: a. DA? Yes= 12 (80%) No= 0 If yes, what type of assistance? -financing= 3 (20%) -Technical= 12 (80%) Others: b. Province? Yes= 9 (60%) No= 3 (20%)	Not at all= 0

II. Aside from the Local Government Code other special laws as enumerated below, also devolved to LGUs certain functions /services. Are there functions provided in such laws or other laws that you may know of that are supposed to be performed by LGUs but are continued to be performed by the DA?

Special Laws:

- **AFMA**
- Agricultural Engineering Act*
- Fishery Code *
- RA 8550

*Provided by LGUs

If yes, please enumerate services /functions: if no proceed to the next question:

1. augmentation funds for updating of salaries and wages
2. on-site researches
3. bottoms-up planning
4. maintenance of provincial plant nursery
5. extension services
6. Chapter 4 of AFMA (irrigation) : No turn-over to LGUs has been done yet by NIA on the ff:
 - a. operation and maintenance of HIS
 - b. planning, design and management of CIS

**III. What other functions/services retained by DA (as enumerated below) should be devolved to LGUs?
(Please tick the box)**

1. Crop prioritization as banner program at LGU level
2. regulatory services / functions
3. plant quarantine
4. fisherman's license
5. funding and financial aspects

6. implementation of agri-infra projects (irrigation, post-harvest, etc...)
7. decision-making should be participatory in nature
8. project proposals emanating from LGUs should be given attention, not the blueprints from DA. Agricultural projects should be adoptive
9. regulation and registration of fishponds

No. of respondents to questions II and III = 6

ANNEX B

Policy Formulation Workshop Agriculture and Fisheries Development Survey Results

<i>Indicate in your assessment, which of the services enumerated are provided by your province.</i>	Degree of Frequency					# Staff assigned
	Always	Frequently	Sometimes	Seldom	Never	
For a Province:						
1. Agricultural extension and on-site research services and facilities						4
• Prevention and control of plant and animal pests and diseases	57	21	7	7	0	12
• Dairy farms	14	7	7	36	0	1
• Livestock markets animal breeding stations, and artificial insemination centers	29	21	7	7	29	4
• Assistance in the organization of farmers' and fishermen's cooperatives and other collective organizations	71	0	29	0	0	6
• Transfer of appropriate technology	71	0	21	7	0	11
2. Program planning, monitoring and evaluation	57	29	0	7	0	20
3. Data collection and validation	29	50	14	7	0	15
4. Provide local farmers' groups linkages with higher level organizations	36	14	43	7	0	13
5. Formulate local regulations to ensure the quality of the agriculture inputs available.	0	21	36	21	21	5
6. Prevent/ regulate the use and sale of products that may cause negative externalities	14	0	43	21	21	2
7. Certify the quality of the products/ competence of suppliers	21	0	7	36	36	1
8. Use of ICT: Kindly assess the number of technical staff that uses computers						7

ANNEX B2

<i>Indicate in your assessment, which of the services enumerated are provided by: municipality and barangay.</i>	Degree of Frequency				
	Always	Frequently	Sometimes	Seldom	Never
For a Barangay:					
1. Agricultural support services which include					
• Planting materials distribution system	29	14	14	29	14
• Operation of farm produce collection	14	0	43	36	7
• Buying stations;	7	0	14	50	21
2. Maintenance of barangay roads and bridges and water supply systems	14	36	14	36	0
3. Satellite or public market, where viable;	7	0	7	57	29
For a municipality					
1. Extension and on-site research services and facilities related to agriculture and fishery activities:					
• Dispersal of livestock and poultry, fingerlings, and other seeding materials for aquaculture	36	14	29	14	7
• Palay, corn, and vegetable seed farms	7	29	43	14	7
• Medicinal plant gardens; fruit tree, coconut, and other kinds of seedling nurseries	21	7	43	21	0
• Demonstration farms	29	14	50	7	7
• Quality control of copra and improvement and development of local distribution channels, preferably through cooperatives	0	0	21	21	29
• Interbarangay irrigation system*	0	29	21	14	21
• Water and soil resource utilization and conservation projects**	0	21	21	43	14
• Enforcement of fishery laws in municipal waters including the conservation of mangroves;	21	50	7	7	14
2. Infrastructure facilities intended primarily to service the needs of the residents of the municipality and which are funded out of municipal funds:					
• Municipal roads and bridges	36	7	50	7	7
• Communal irrigation	7	21	43	21	7
• Small water impounding projects and other similar projects	0	43	29	7	14

• Fish ports	0	29	14	21	14
• Artesian wells	21	14	36	29	0
3. Public markets, slaughterhouses and other municipal enterprises	43	0	50	7	0
4. Perform inspections and report violations on local ordinances about agriculture.	29	29	29	7	7
5. Collection of data through established procedures	21	21	43	7	7
* NA = 4 ** NA = 2					

ANNEX B3

Problems encountered by LGU

Problems	Always	Frequently	Sometimes	Seldom	Never
Financial constraints of the LGU	50	21	7	0	21
Insufficient/delayed transportation allowance	43	7	21	7	21
Lack of support from LGU	14	0	36	36	21
Mobility (Inaccessibility of municipalities)	14	7	36	14	21
Farmers' attitude	7	14	64	14	0
Farmers lack of willingness to adopt new technology	0	14	57	29	0
Lack of supplies and facilities	29	7	36	7	21
Politics	43	7	21	14	14
Dole out mentality of farmers	36	29	29	7	7
Farmers are difficult to organize	21	7	43	21	7
Devolution-related problems	36	7	29	7	7
Financial constraints of the clientele	50	43	7	0	0
Lack of assistance from national government	7	36	43	14	0
Office lack transportation facilities	43	14	21	7	14
Weather conditions/calamities	29	14	43	14	0
Repayment of loans	43	21	29	7	0
Marketing	36	21	21	21	0
Problems with the bureaucracy	36	14	21	7	7
Lack of trainings for staff development	29	21	29	7	14
Insufficient manpower	29	14	43	14	0
Lack of support at the brgy level	14	14	36	36	0
Peace and order	7	0	50	21	21
Coordination/communication problem	7	29	29	29	0
Lack/inaccessibility of mature technologies	7	14	36	29	7
Hiring of non-technical personnel	14	7	36	21	21
Inaccessibility of new technology	0	21	50	7	21

Inconsistent programs between the national and local government	21	7	43	7	29
Farmers do not like the projects being implemented	29	14	21	29	0
Collection of reports	29	14	21	29	0
Duplication of functions at the provincial and national	29	7	57	7	0
Low quality of inputs	7	21	50	14	7

TOP 10

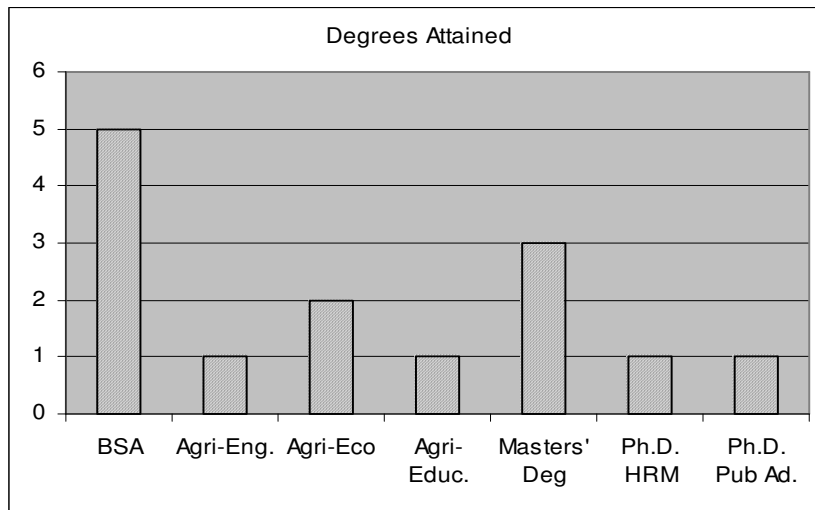
ANNEX B4

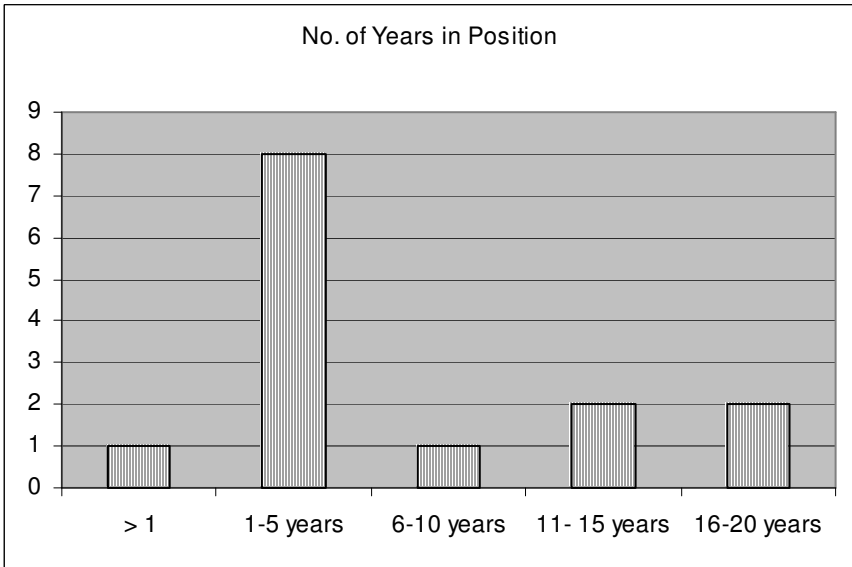
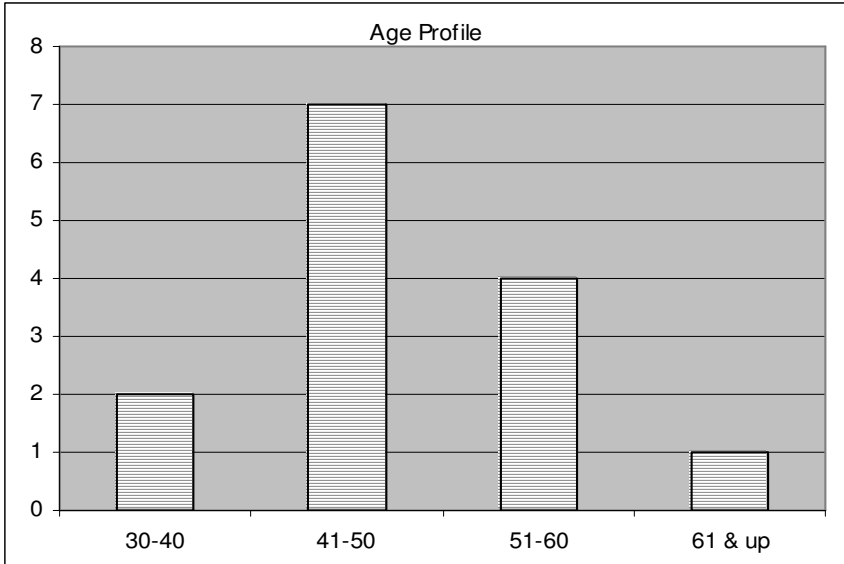
Satisfaction Level Survey

Areas	Satisfaction Level				
	Strongly Satisfied	Satisfied	Neutral	Dissatisfied	Strongly Dissatisfied
Pay	21	50	0	0	21
Work Assignment	43	57	0	0	0
Physical Environment	43	57	0	0	0
Working Relationship					
- With peers	43	50	0	7	0
- With subordinate	21	64	0	14	0
- With Superiors	36	64	0	0	0

ANNEX B5

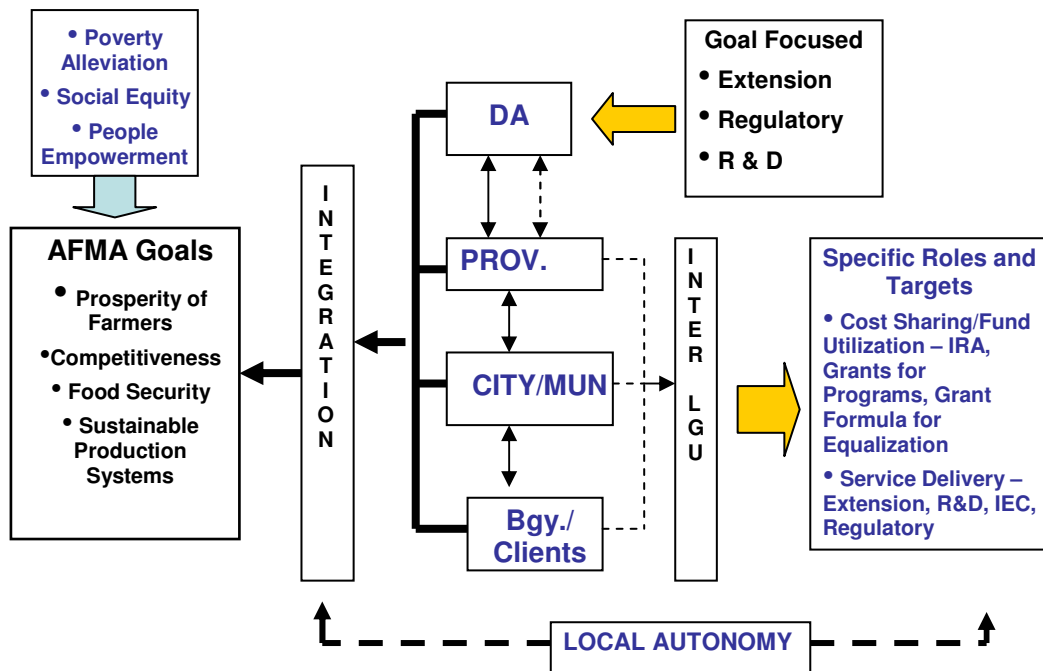
Profile of Participants





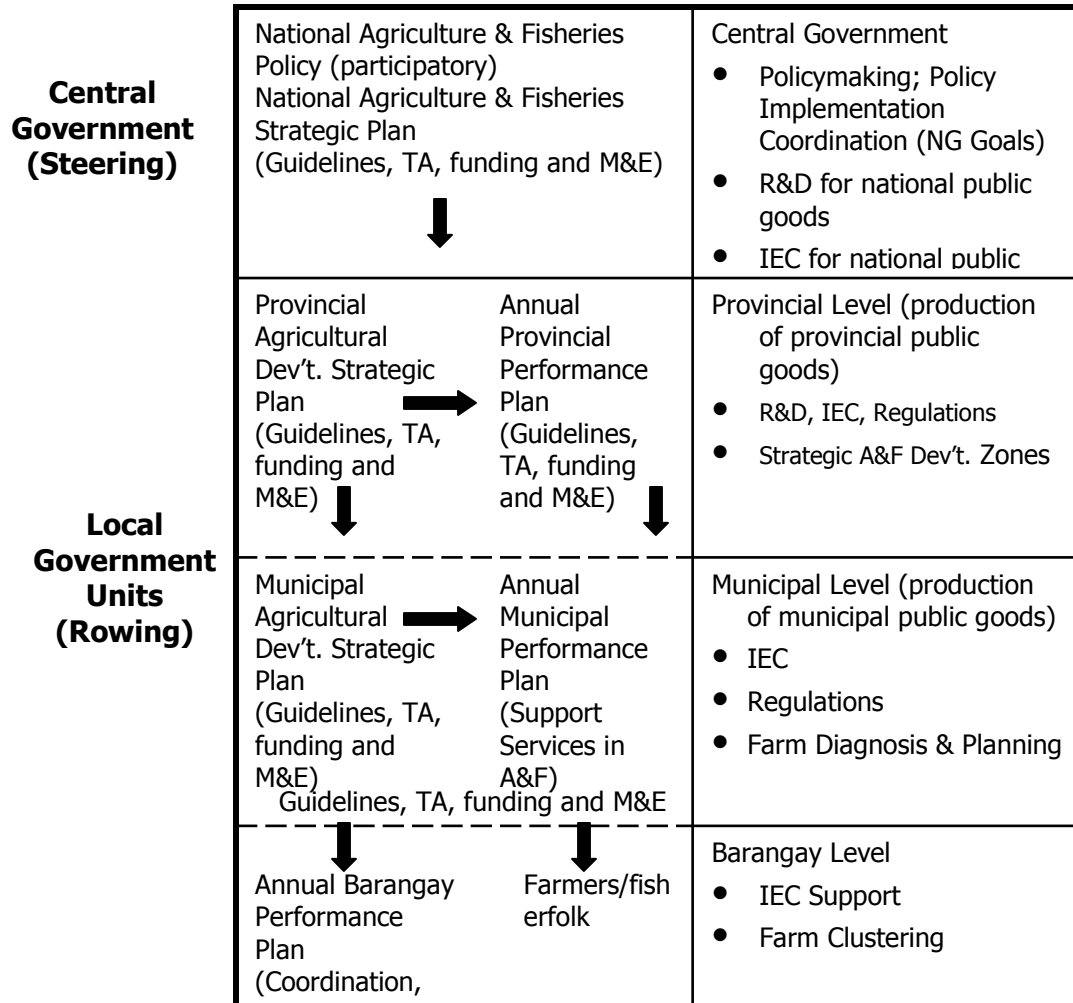
ANNEX C

Proposed Framework for Rationalization, Continuing Decentralization and Devolution of Agriculture and Fisheries Development



ANNEX D1

Proposed DA-LGU Framework for Partnership



ANNEX D2

KRA Matrix for DA-LGU Partnership

Key Result Areas	Role of the DA	Role of the LGU		
		Province	Mun/City	Barangay
1. Policy & Planning				
2. Program Implementation 2.1 R & D 2.2 IEC 2.3 Regulation				
3. Monitoring & Evaluation				
4. Admin & Finance				
5. Knowledge Management				
6. Capability & HR Development				