

# Project Development and Monitoring Fund

**Susan Rachel G. Jose**

OIC-Director

Regional Development Coordination Staff

National Economic and Development Authority





# Outline

- **Background**
  - Legal Basis
  - Objective Tree
  - Funds Flow
  - ODA Contributions
- **Implementation Framework**
  - Eligible Activities
  - Proponents and Beneficiaries
  - Monitoring and Assessment
  - Status of Implementation
- **Pipeline**



# Background

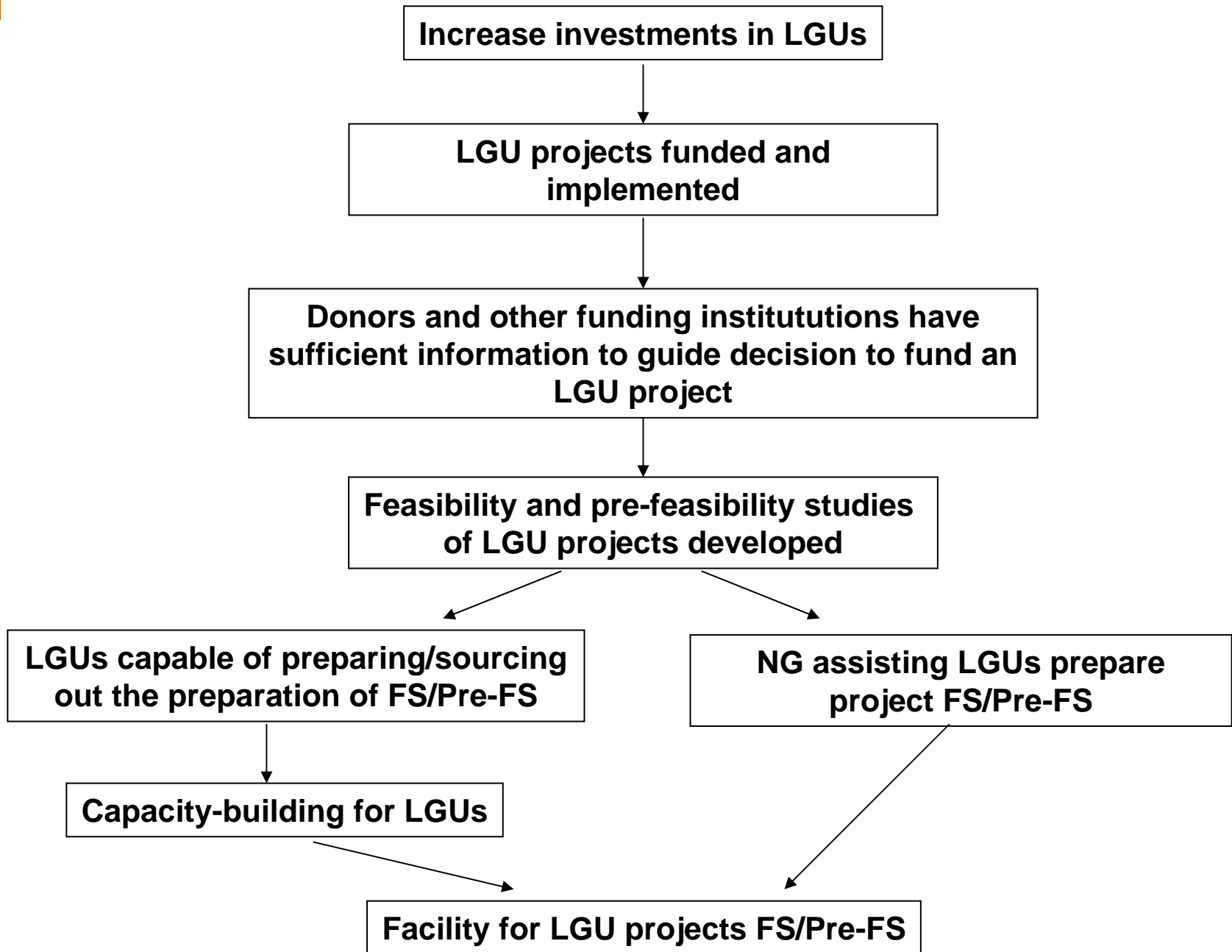


# **Legal Basis: RA 8182, Official Development Assistance (ODA) Law of 1996**

- Section 4 on the use of ODA for equitable development, mandates that NEDA shall endeavor to obtain ODA funds from donor countries, which shall approximately be five percent of the total ODA for the immediately preceding year.

## **RA 8182, Sec. 4 continued**

- Said funds shall be administered by NEDA for project identification, feasibility studies, master planning at the local and regional levels and monitoring and evaluation



**Increase investments in LGUs**

**LGU projects funded and implemented**

**Donors and other funding institutions have sufficient information to guide decision to fund an LGU project**

**Feasibility and pre-feasibility studies of LGU projects developed**

**LGUs capable of preparing/sourcing out the preparation of FS/Pre-FS**

**NG assisting LGUs prepare project FS/Pre-FS**

**Capacity-building for LGUs**

**Facility for LGU projects FS/Pre-FS**

# Funds Flow

GOP-Donor Agreement

Donor

Bureau of Treasury

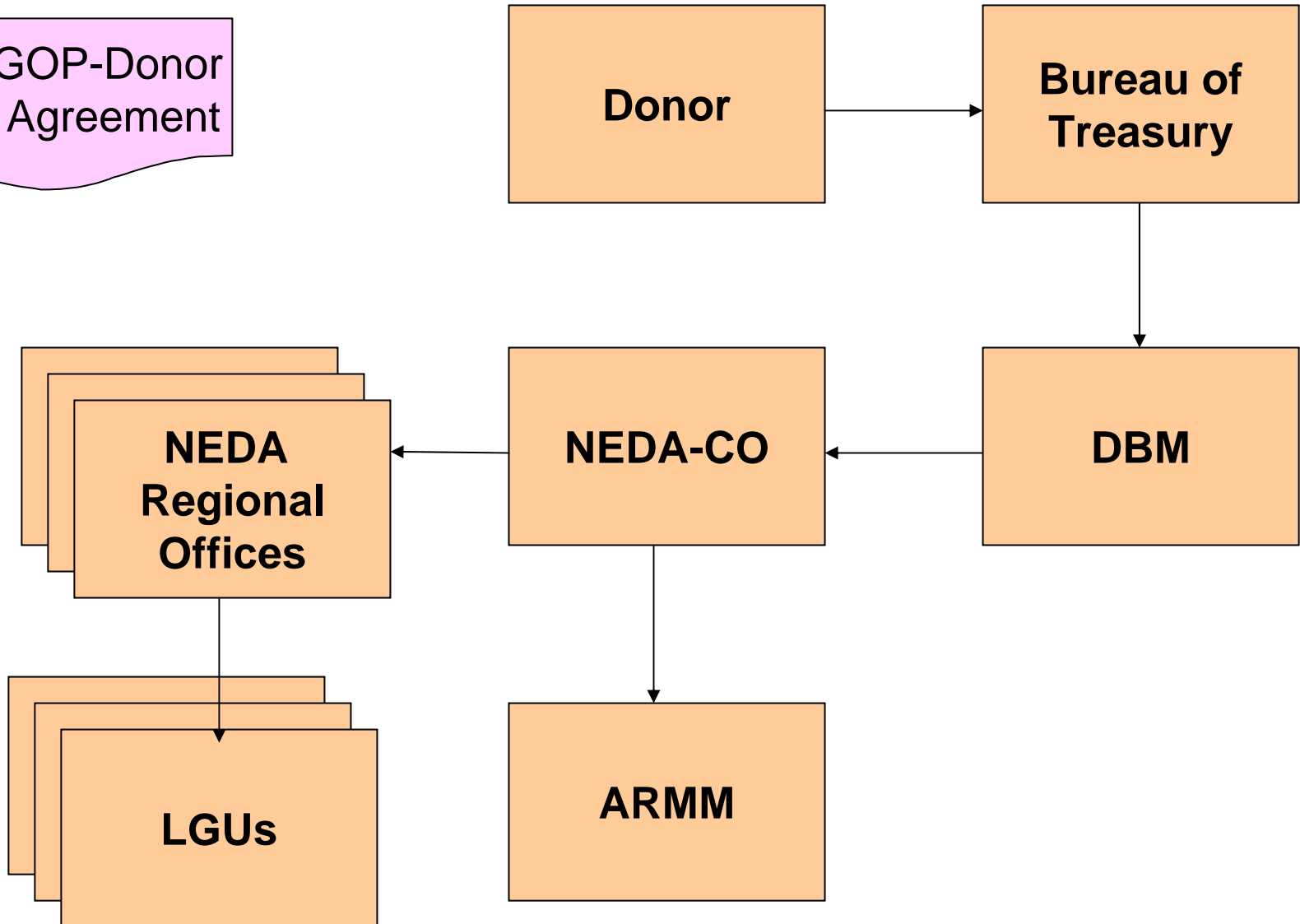
NEDA  
Regional  
Offices

NEDA-CO

DBM

LGUs

ARMM



# PDMF Contributions

*AECI-Spain (1997)*

*PhP 7.04 M*

*Japan-KR2 (1999)*

*PhP 33.078 M*

*New Zealand Aid (2005)*

*PhP 2.09 M*



# **Implementation Framework**

# Guidelines for Implementation

- **General Guidelines approved by the NEDA Management Committee**
  - *eligible activities*
  - *beneficiaries*
  - *proponents*
  - *screening and approval process*
  - *institutional arrangements*
  - *regional allocation*
  - *Monitoring system*

# Guidelines for Implementation

## ■ Specific NEDA Regional Office Guidelines

- *Subregional allocation*
- *Priority areas of assistance*
- *Implementing mechanisms with LGUs*



# ***Eligible Activities***

- Pre-investment Studies (FS, Pre-FS)
- Master Planning and Investment Programming
- Project monitoring and evaluation
- Training and Capacity Building on Project Development

# ***Proponents***

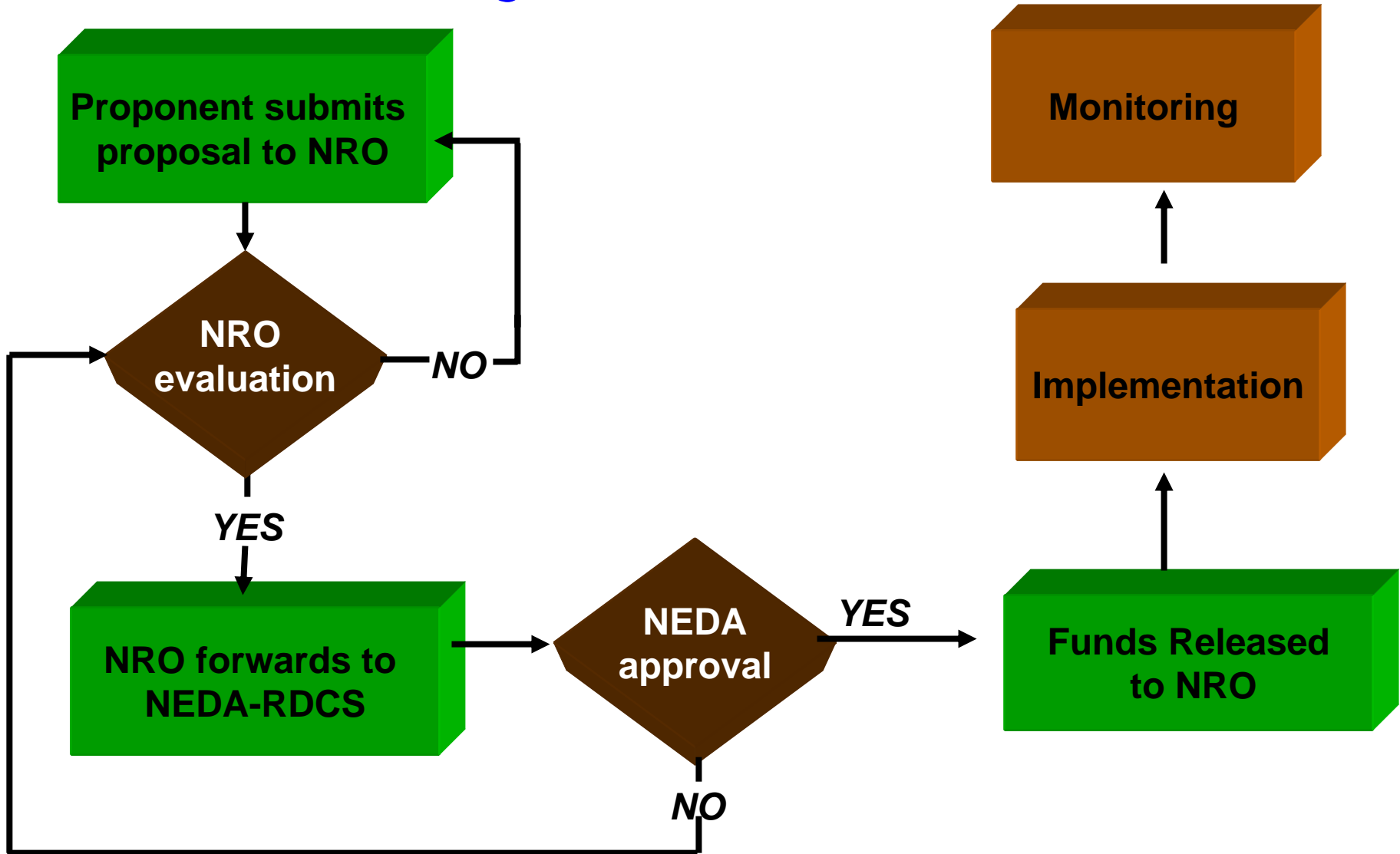
- **LGUs**
- ***NGAs***
- ***NGOs***
- ***RDCs***
- ***Congress***
- ***Private Sector***
- ***NROs***

***Provided, project proposals are endorsed by an eligible LGU***

# ***Beneficiaries***

- ***LGUs – priority for 4<sup>th</sup> to 6<sup>th</sup> class or LGU clusters***
- ***Regional bodies but with 4<sup>th</sup> to 5<sup>th</sup> class LGUs as indirect beneficiaries***

# Activity Flow



# ***Bases for Review of Proposals***

**PDMF General  
Guidelines**

**NRO  
Guidelines**

## ***Rules of Thumb:***

- 1. Proponents should show that the proposed activity will benefit an eligible LGU or cluster of LGU, and how.**
- 2. Proposals for master planning and training activities should lead to project identification.**
- 3. Project fundability**

# Modes of Implementation

## TA to LGU by PDAC



- Team of experts coming from regional line agencies assist the LGU
- LGU commits counterpart project team
- Learning by doing mode



### What is PDAC?

Established under the Regional Development Councils, PDACs serve as the region's center of knowledge on project development.

To operationalize the center, a PDAC Regional Core Team is formed within the NEDA Regional Office to be assisted by regional line agencies, at least from DTI, DA, DAR, DepEd, DENR, DPWH, with the NRO as lead agency.

# Modes of Implementation

## By administration

- LGU conducts data gathering, report writing, liquidation
- NRO provides advisory services, monitors progress

## Contract out

- LGU hires consultants
- NRO provides advisory services, monitors progress

# Modes of Implementation

**MOA with ARMM**

- NEDA-ARMM MOA defining coverage, responsibilities, reporting
- ARMM counterpart in kind



# **Regional Allocation Criteria**

**60% distributed to regions based on**

- Population**
- Poverty Incidence**

**40% equal sharing**

**Administrative cost should not exceed 15 percent of total PDMF assistance.**

# NEDA-LGU Cost Sharing

- ***LGU counterpart***
  - ***cash***
  - ***in kind ( e.g. supplies, logistics and secretariat support, packaging of documents)***
  - ***counterpart staff***

# *Status of KR2 Contribution*





## ***78 Technical Assistance***

- 59 project studies
- 11 master planning activities
- 8 capacity building programs

# Cost of PDMF Assistance

Project Type	Range (‘000 PhP)	Ave Cost per MP/FS (‘000 PhP)
<b>Master Plan</b>	240 -700	429 (11 MPs)
<b>Feasibility Studies</b>		
■ Water Resources	100 - 794	316 (16 FS)
■ Public Market	105 - 293	184 (6 FS)
■ Livestock/fishery	81 - 394	216 (5 FS)
■ Postharvest/food processing	120 - 399	187 (11 FS)
■ Ports/roads and bridges	175 -	535 (4 FS)
■ Irrigation/watershed dev't	1,187	460 (3 FS)
■ Environment	340 - 645	353 (3 FS)
	300 - 345	

# **21 Projects Funded**

## ***A. Municipal Waterworks Improvement***

### **Fund Source**

<b>1. Pangantucan, Bukidnon</b>	<b>LOGOFIND, MINSSAD</b>
<b>2. Panaon, Misamis Occ.</b>	<b>LOGOFIND</b>
<b>3. Medina, Misamis Or.</b>	<b>Private Cooperative</b>
<b>4. Llanera, Nueva Ecija</b>	<b>Private cooperative</b>
<b>5. Altavas, Aklan</b>	<b>LGU</b>
<b>6. Aleosan, Cotabato</b>	<b>STAR-CM</b>
<b>7. Arakan, Cotabato</b>	<b>LGU</b>
<b>8. Ajuy, Iloilo</b>	<b>LGU/NIA</b>

# **21 Projects Funded**

## ***B. Farm Level Grains Center***

### **Fund Source**

<b>9. Sta. Josefa, Agusan Sur</b>	<b>AECI</b>
<b>10. Prosperidad, Agusan Sur</b>	<b>AECI</b>
<b>11. Jabonga, Agusan Norte</b>	<b>AECI</b>

# 21 Projects Funded

## *C. Public Markets*

### Fund Source

**12. Aurora Province**

**LOGOFIND**

**13. Buruanga, Aklan**

**LGU**

## *D. Port*

**14. Sarangani, Davao Sur**

**PPA**

# **21 Projects Funded**

## ***E. Roads and Bridges***

### **Fund Source**

**15. Pasac-Culcul Road,  
Pampanga**

**“Tulong ng Pangulo sa  
Barangay” Program**

## ***F. Coastal Resource Regeneration***

**16. Antique Province**

**LGU, ANIAD**

# 21 Projects Funded

## *G. Tourism Development*

### Fund Source

17. Cuenca, Alitagtag, Sta. Teresita, San Nicolas, Agoncillo, Batangas

PTA

18. Suhot Spring, Capiz

LGU

19. Guian Nature Resort, Samar

PBP/LGU, LWUA, and a Private firm

# 21 Projects Funded

## *H. Livelihood Projects*

### Fund Source

**20. Ylang-Ylang Essential  
Oi, Anao, Tarlac**

**Private firm  
(Biowealth)**

**21. Livelihood for  
Fisherfolks, Tangalan,  
Aklan**

**SEAFDEC**



# ***Status of NZAID Contribution***

## **5 TA Activities in CAR, Region 2**


- 1. Master Plan and Pre-FS on the Chico River Development and Management Plan**
- 2. Pre-FS on the Micro-Enterprise Development Project of IPs in Kadaclan Ancestral Domain**
- 3. FS on Non-Renewable Energy Projects in Off-Grid Areas**
- 4. Water Systems Projects in Waterless Barangays in Nueva Vizcaya and Quirino**
- 5. Completion of three Project Proposals for Funding Under Energy Regulations 1-94 in Cagayan and Isabela**

# Monitoring and Assessment of PDMF activities

- Field monitoring by NROs
- Preparation of integrated quarterly monitoring reports by RDCS
  - Progress of individual technical assistance activities
  - Status of fund releases and disbursements
  - Problems encountered
  - Good practices
- Financial Audit Reports
- Overall assessment of implementation thru survey, interviews and field visits by both NROs and RDCS
- Project Completion Report



# PDMF PIPELINE

- 
- NEDA has generated 500 potential projects for PDMF assistance amounting to about 200 million pesos.
  - These projects include priority local projects (e.g., municipal enterprises, infrastructure projects, solid waste management projects) needing funding assistance
  - The nature of projects are those that can be linked with fund facilities for LGUs similar to what was covered by the LOGOFIND, among others



**THANK YOU!**