



Championing for economic growth: Local and Regional Economic Development (LRED)

From the Visayas to the Rest of the Philippines

A Presentation by the
German Technical Cooperation

Presented by
Anja Gomm, Program Manager
Private Sector Promotion Program/SMEDSEP
4 November 2008, Makati City





Private Sector Promotion (SMEDSEP) Intro:

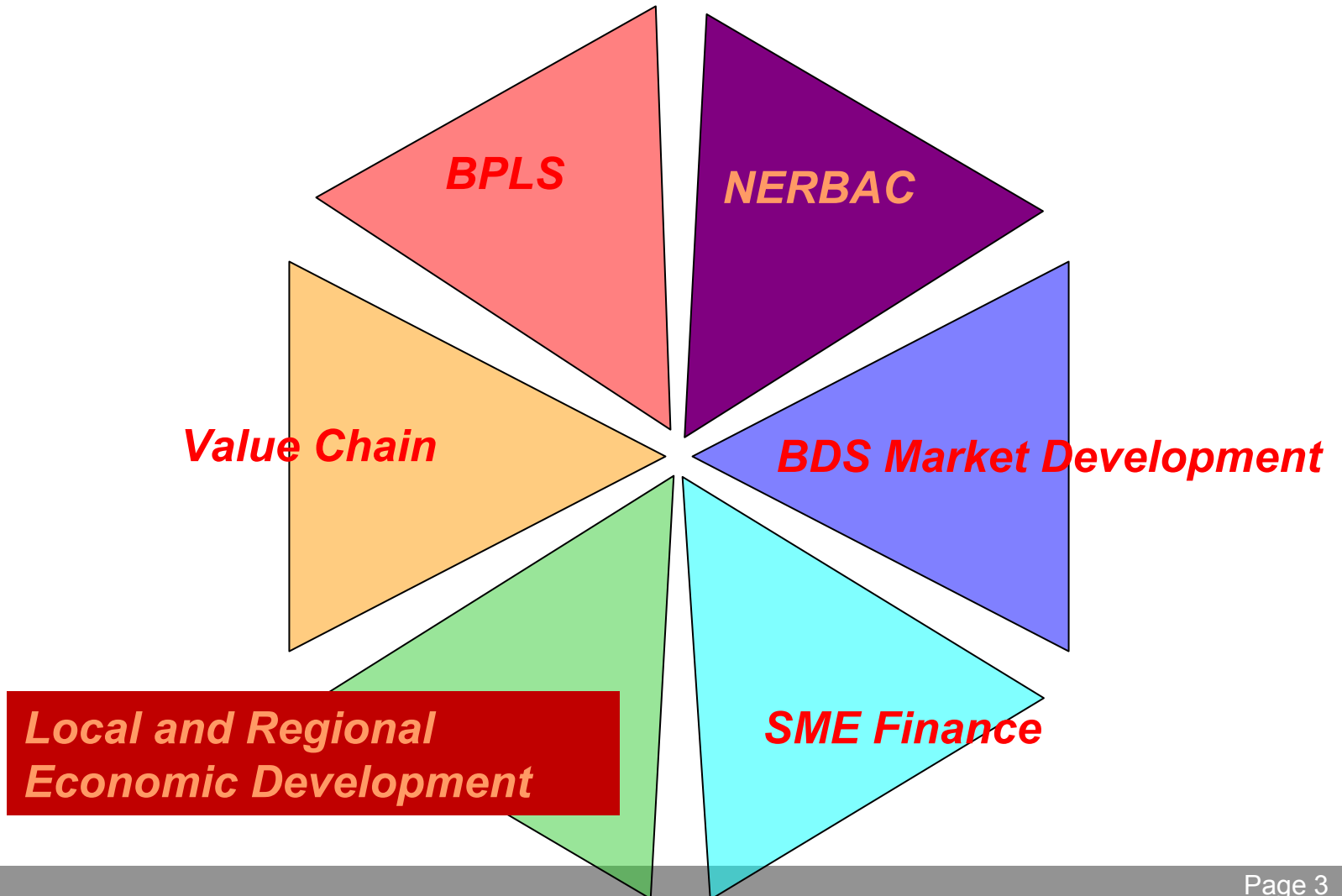
- **Objective:** The framework conditions for private sector development in the Philippines, especially in the Visayas, are improved

- **Mission:** Facilitate the development and replication of sustainable models for improving the local business climate (especially for SMEs) in the Visayas

- The Program has **three main components:**
 - Harmonization of the National SME Development (SMED) Plan
 - Promotion and Replication of Models for Improving the Local Business and Investment Climate
 - Support to the National Competitiveness Council



The BIC Models





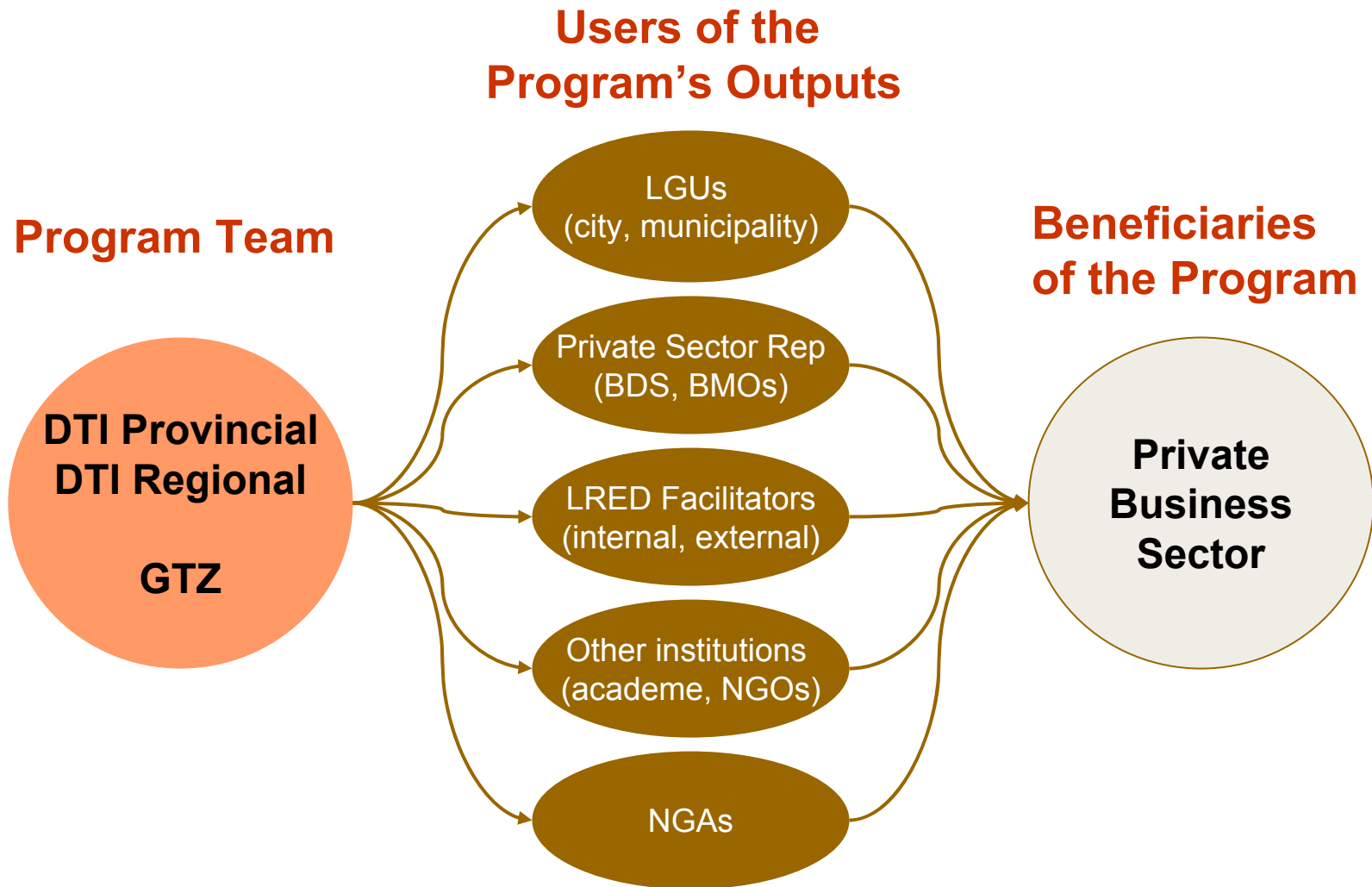
Local and Regional Economic Development (LRED)

LRED is a participatory planning and implementation process wherein public and private stakeholders in a locality work together to improve conditions for economic growth and employment generation. LRED is about mobilizing people and making them work together to effect change.



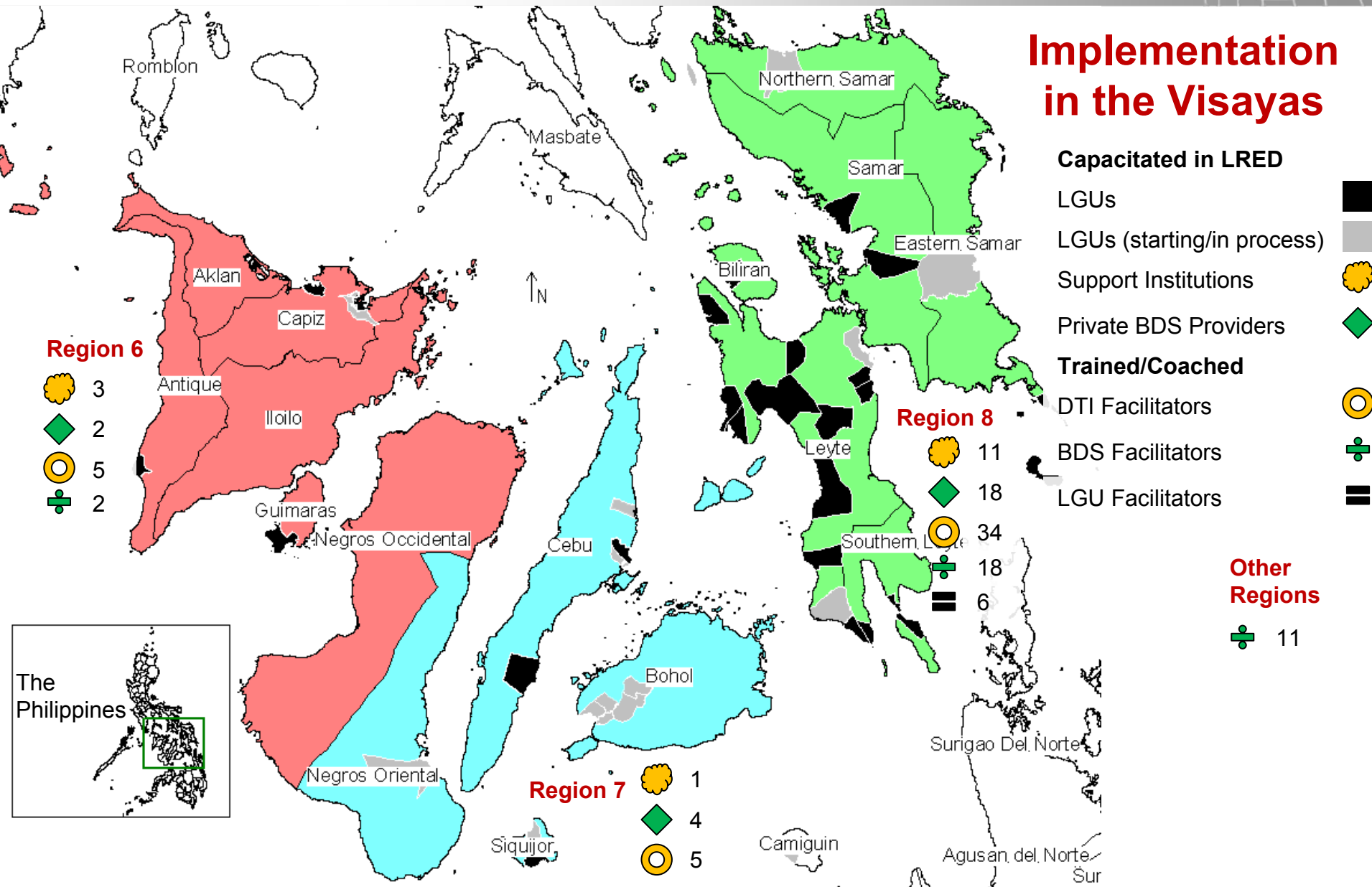


Component 2 - Stakeholder Map - LRED





Implementation in the Visayas





LRED Upscaling 2008

Upscaling of LRED 2008

done LRED Orientation
[Luzon (1 Aug 2008) and
Mindanao (8 Aug 2008)]

done Identification of 13 Provinces
(from 14 Regions)
Submission Date: 15 August 2008

done Training of
25 LRED Trainers
[Baybay, Leyte / 24 to 30 Aug 2008]

Training of LRED Facilitators
[two batches in Luzon and one batch in
Mindanao (Oct to Dec 2008)]

14 Regional Trainings
of Facilitators (one per Region)

LRED Workshops w LGUs
(Nationwide)



The Way Forward

- Institutionalization of LRED
 - Scout for academic/training institution that will anchor capacity development for LRED
 - Establish a network of LRED practitioners to promote knowledge sharing and iterative CD
 - Capacitate policy makers in DTI ROG and other NGAs on role of LRED for LGU and SMED planning
- Align and enroll LRED in local plans (AIP and ELA)
 - Advocate adoption of LRED for municipal level economic planning (Comprehensive Development Plan, Economic Sub-section)
- Monitoring (LRED plan implementation and capacitation of facilitators)



Thank you for your attention

commissioned by



Federal Ministry
for Economic Cooperation
and Development